

07.

CHARMAINE KEAL
SPARQ-ED



GOPOD test
 A chemical reaction between glucose in samples and GOPOD generates a product with a pink colour. The higher the amount of glucose in a sample – the deeper the pink.
 To run the test a small amount of each standard and patient sample must be added to GOPOD reagent.
 Each test:
 25µL standard/sample + 750µL of GOPOD reagent

GOPOD test
 A chemical reaction between glucose in samples and GOPOD generates a product with a pink colour. The higher the amount of glucose in a sample – the deeper the pink.
 To run the test a small amount of each standard and patient sample must be added to GOPOD reagent.
 Each test:
 25µL standard/sample + 750µL of GOPOD reagent

SPARQ-ed

PARC

Centres Performing Advanced Research QLD







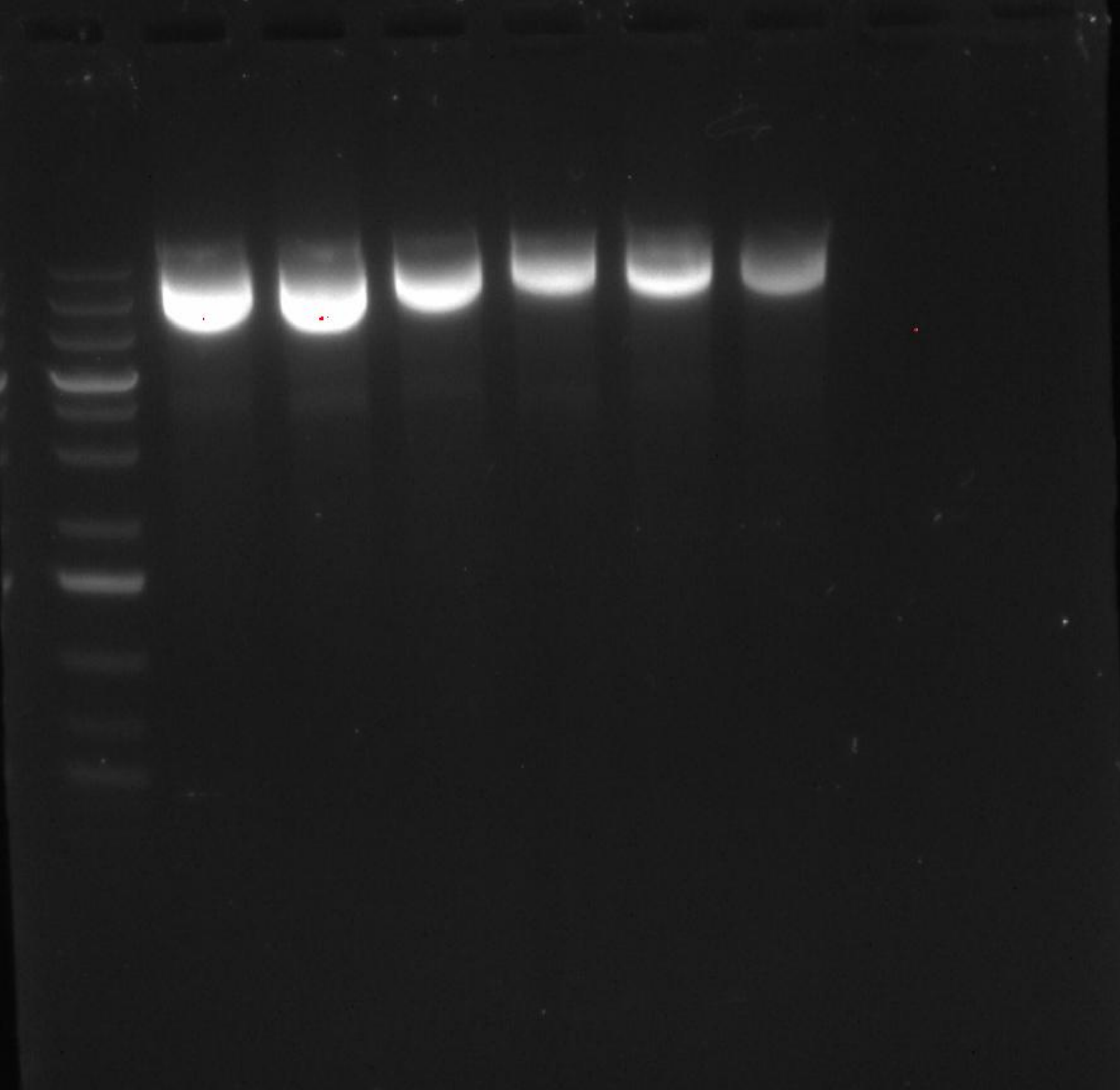
The logo for the Translational Research Institute Australia (TRI) features the letters 'TRI' in a bold, white, sans-serif font. To the right of the letters is a white geometric icon consisting of four diamond shapes arranged in a larger diamond pattern.

TRI

TRANSLATIONAL RESEARCH INSTITUTE
AUSTRALIA









EEA1
Early Endosome
Antigen 1

TRIC

To see if
PEZ affects
Transferrin

Transferrin
colocalization (Dyumin)

Gap could
be due to
removal of cells
at the surface

Gap is on

Anaphase
& thesis

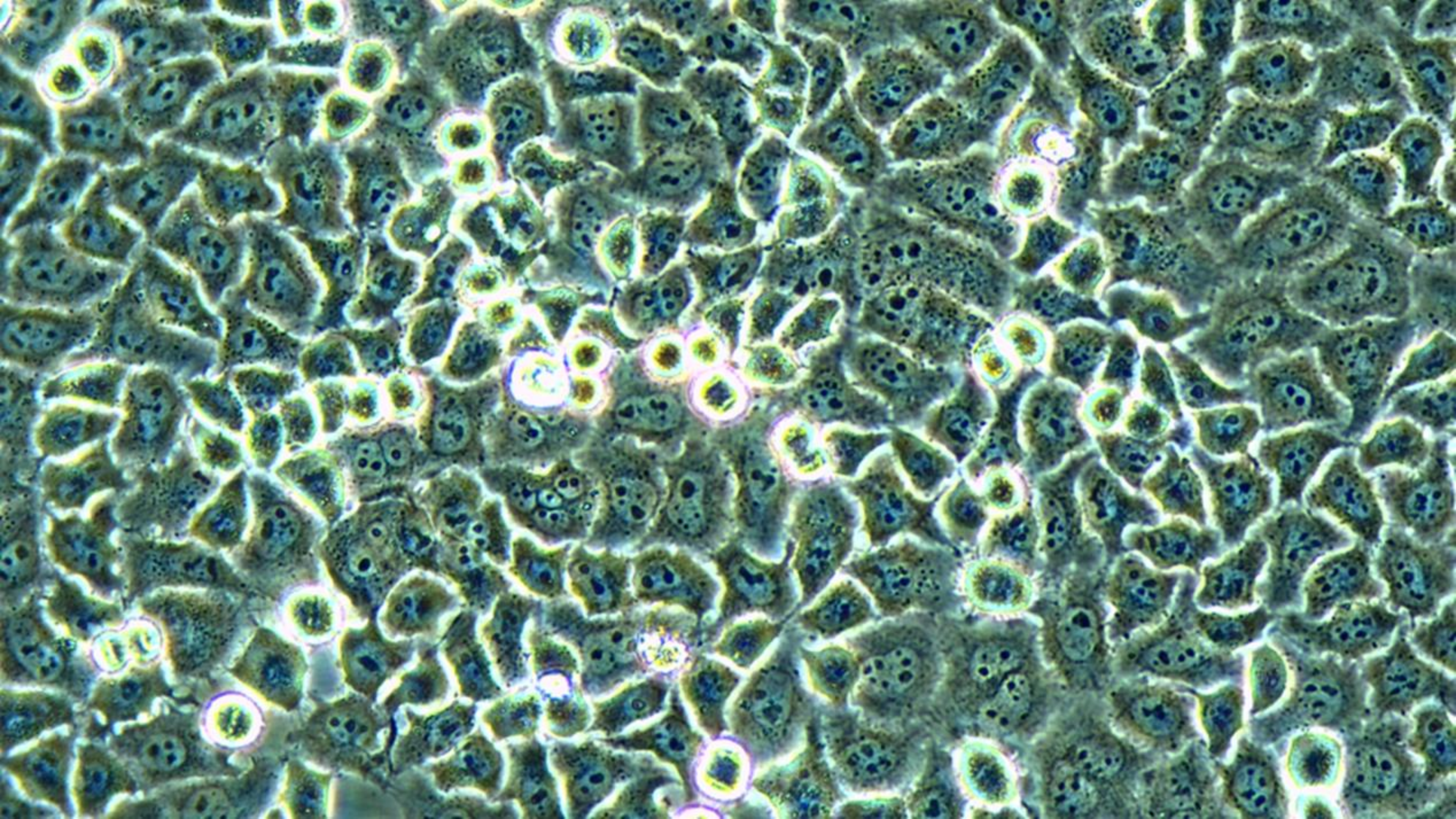
DAPI

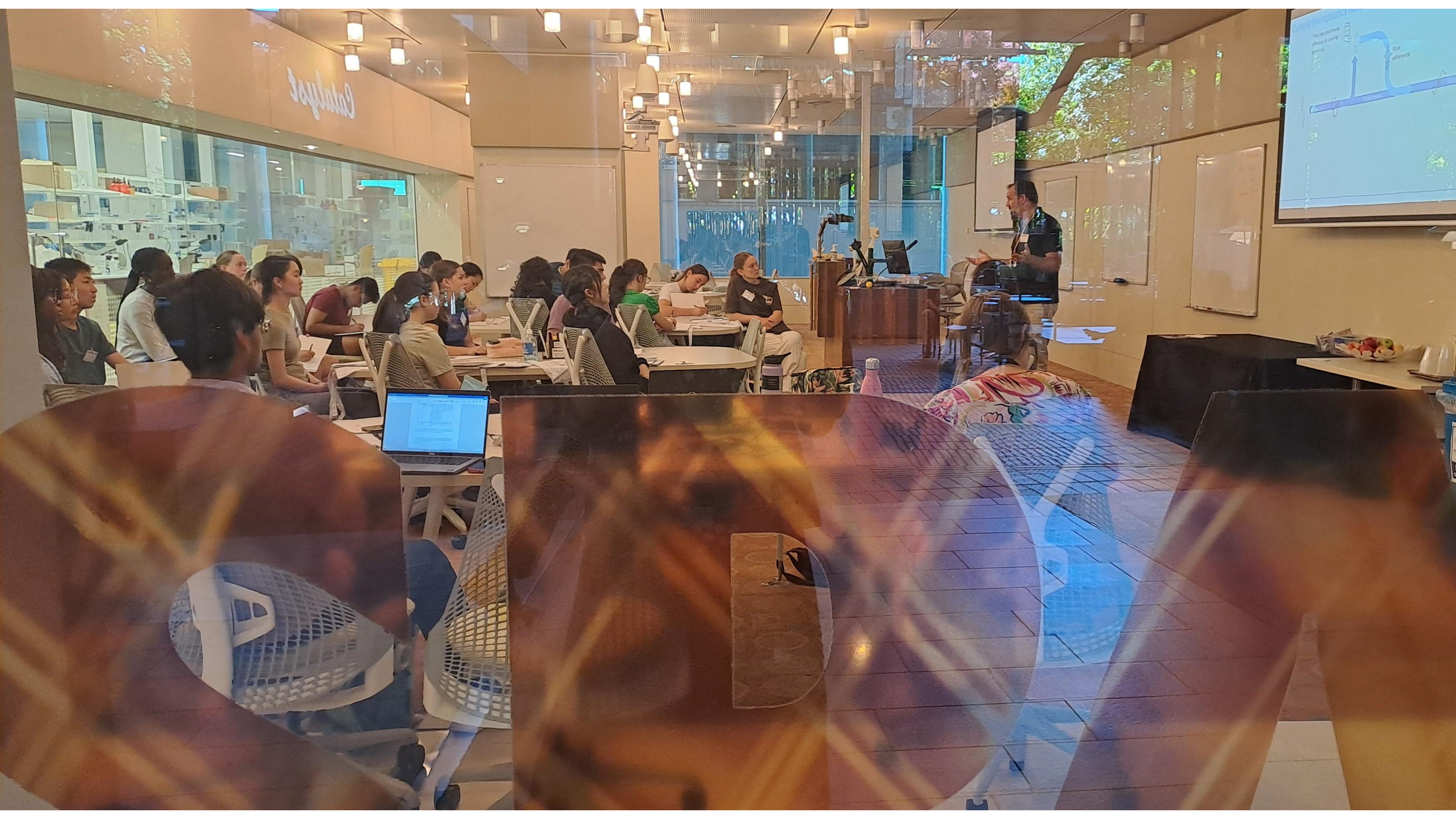
T micro
happ

Spotty
the TRIC-550
remains
less more
time

ing Aqvay











SPARQ-ed

A partnership between:



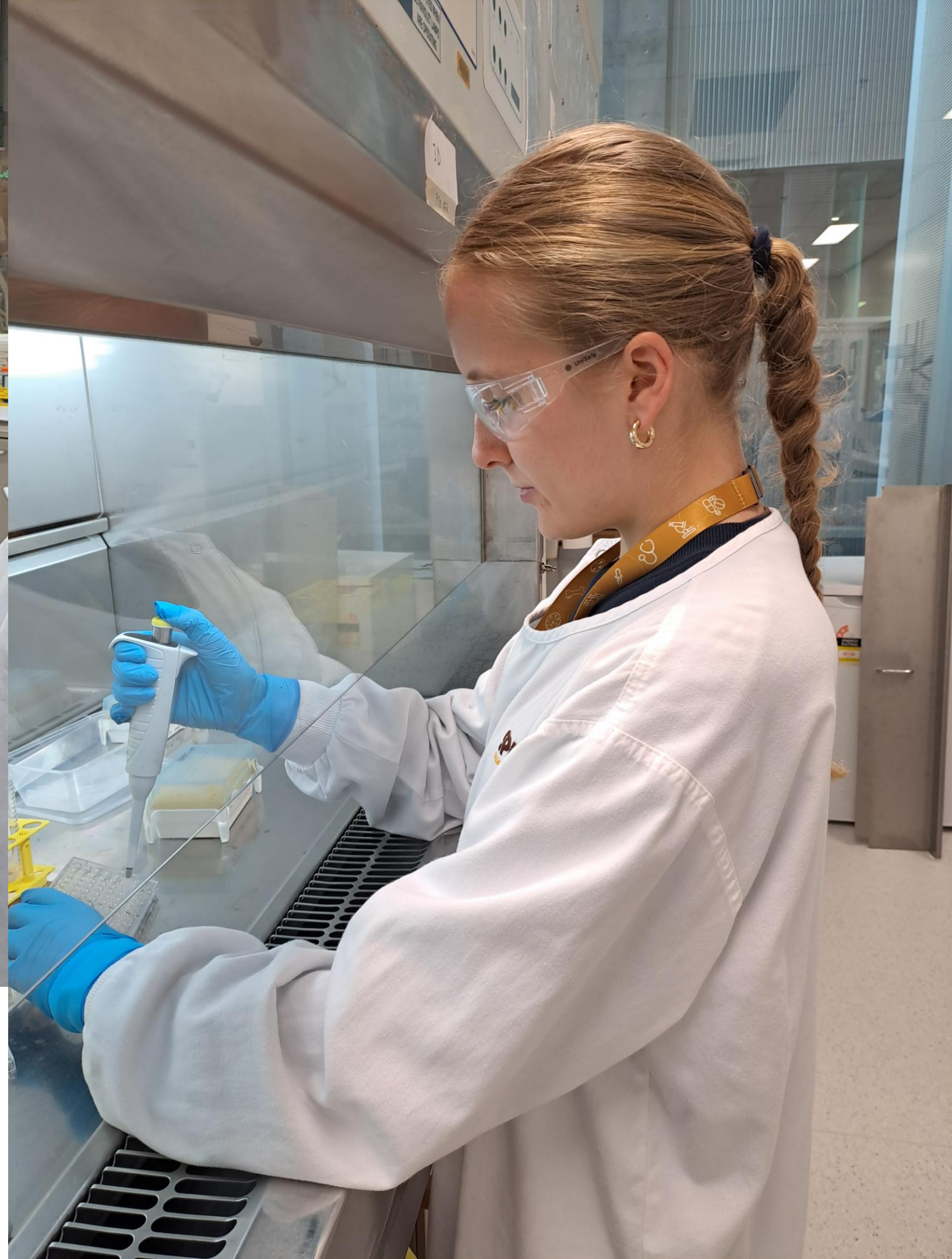
Queensland Health

Proudly supported by:















Charmaine Keal

HOD SPARQ-ed

✉ charmaine.keal@tri.edu.au

📞 +61 499 761 708

Connect with us

tri.edu.au

